

# COMMUNITY INFORMATION SESSION

CV STARR EAST ASIAN LIBRARY RENOVATION

MARCH 26, 2026

via Zoom



# AGENDA

PROJECT BACKGROUND

PROJECT OVERVIEW

PROJECT SCHEDULE

CONSTRUCTION IMPACTS

PROJECT COMMUNICATIONS



# PROJECT BACKGROUND



## ABOUT THE LIBRARY

- Opened in 1912 & originally used as the Law Library until early 1960s.
- Designed by McKim, Mead & White Architects
- The ceiling is constructed with Guastavino tile vault & cast plaster finish ceiling.
- Recent Library Renovations:
  - 1983: Interior refresh and lighting. Named for CV Starr.
  - 2009: Interior cosmetic refresh including a new circulation desk.
- The CV Starr East Asian Library serves multiple departments and ~ten specialized Centers, and interfaces with ~eight aligned non-CU institutions.

## PROJECT DEVELOPMENT MILESTONES

- NOV 2022: Initial Observations of Historic Ceiling
- NOV 2022 - APR 2023: Ceiling Conditions Assessment
- MAY 2023 - SEP 2023: Ceiling Demolition
- SEP 2025 – CURRENT: Design Phase

# PROJECT BACKGROUND | TEAM + PARTICIPANTS



## **COLUMBIA UNIVERSITY LIBRARIES**

- Ann Thornton, Chris Cronin, Richard Heaps, Jim Cheng

**PROJECT MGMT:** CPM | Exteriors & Historic Preservation Group.

## **DESIGN CONSULTANTS:**

- Belmont Freeman Architects (Design Architect + AOR)
- Building Conservation Associates (Ceiling Restoration Architect)
- TYLin Engineering (Structural Engineer)
- Loring Engineers (MEP + FLS Engineer)

## **GENERAL CONTRACTOR:** SPK Lewis

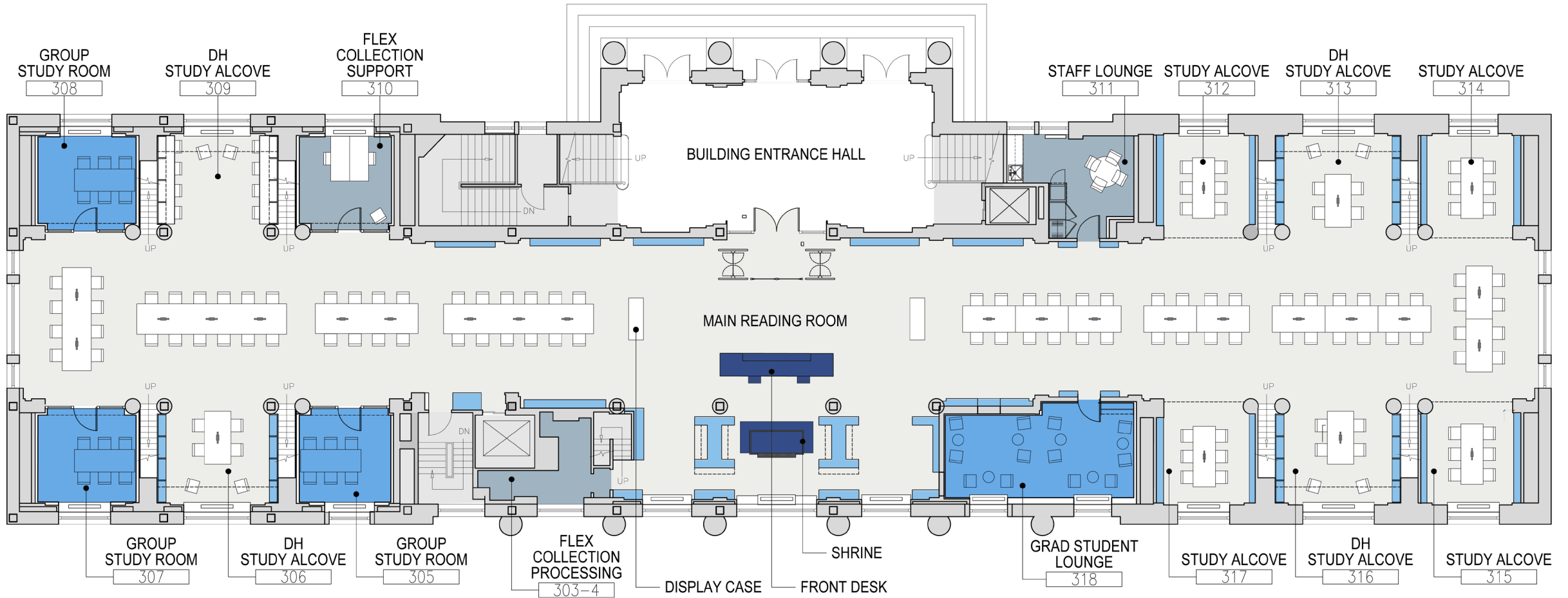
- Multiple trade & specialty subcontractors.

## **FURNITURE + AUDIO VISUAL**

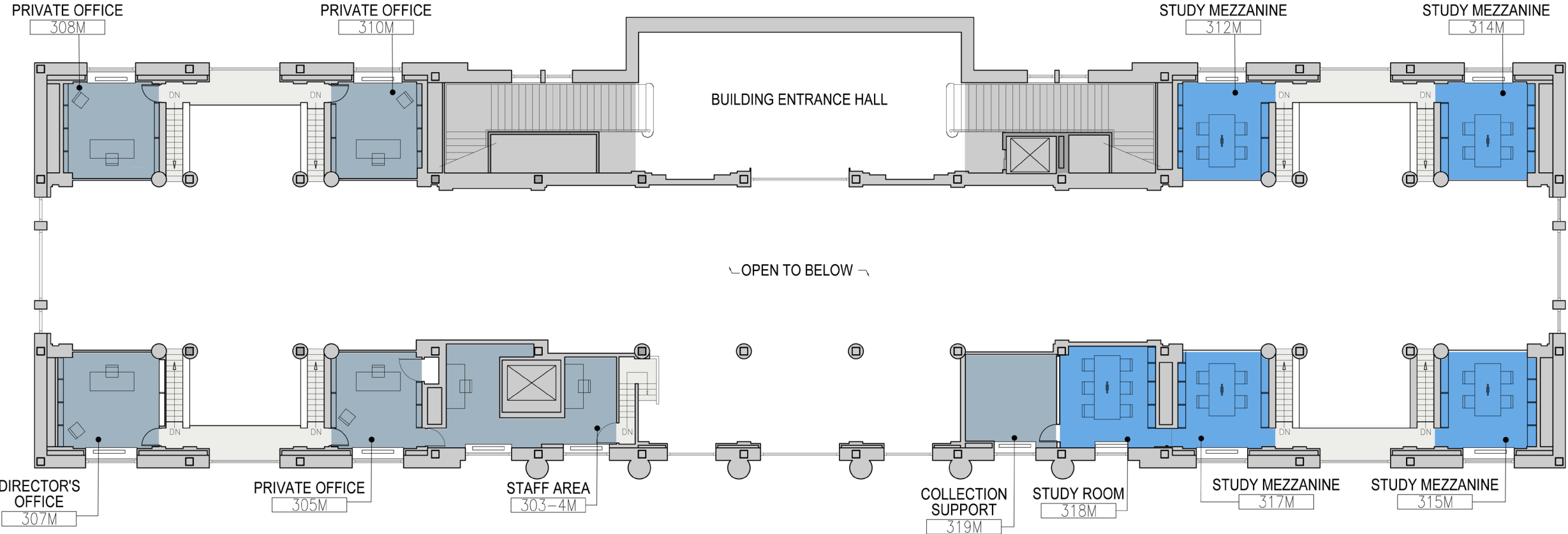
- Empire Furniture + EduTek Ltd

# PROJECT OVERVIEW

# FLOOR PLAN | MAIN LEVEL



# MEZZANINE LEVEL PLAN



# PROJECT OVERVIEW | SCOPE OF WORK

## 1. HISTORIC CEILING REPLACEMENT

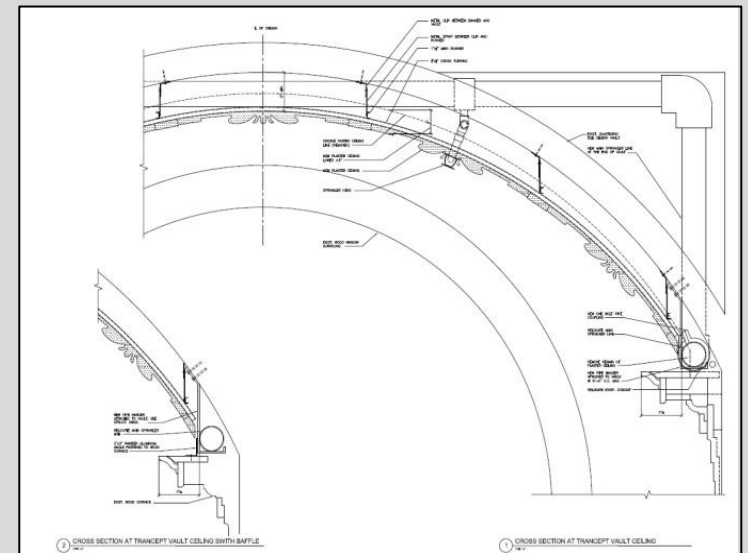
- Patch + stabilize exist terracotta subceiling.
- Install modern structural ceiling support system.
- Fabricate & install cast plaster finish ceiling.
- Integrate sprinkler system, duct diffusers and electrical.

## 2. LIGHTING, IT + AV

- Refurbish Reading Room chandeliers & pendants.
- Replace bookshelf lighting.
- Lighting controls system & emergency lighting.
- New AV in Group Study Rooms
- Update IT infrastructure, distribution & devices.

## 3. GENERAL SPACE RENOVATIONS

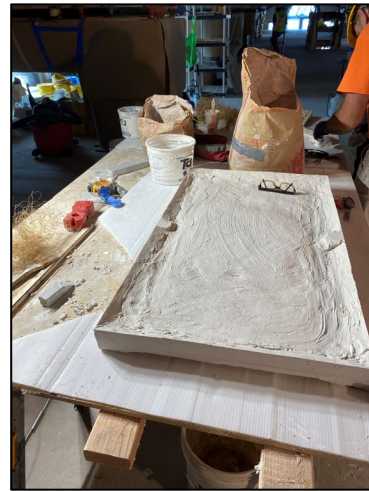
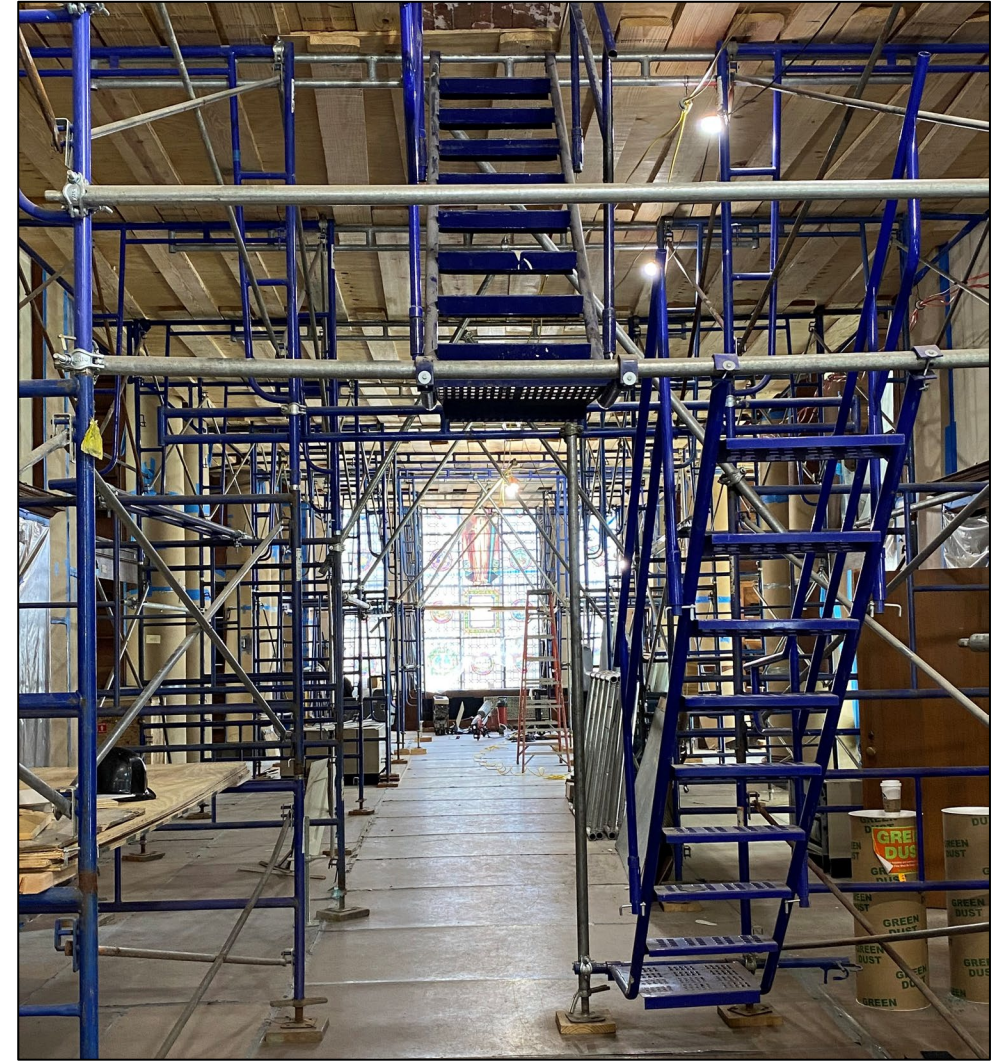
- Create four (4) new Group Study Room
- Create one (1) new Graduate Student Lounge
- Cosmetic 'Plus' refresh of open Study Spaces (Mezz)
- Refresh of Staff Offices (Mezz)



# PROJECT OVERVIEW | HISTORIC CEILING PRESERVATION



# PROJECT OVERVIEW | HISTORIC CEILING PRESERVATION



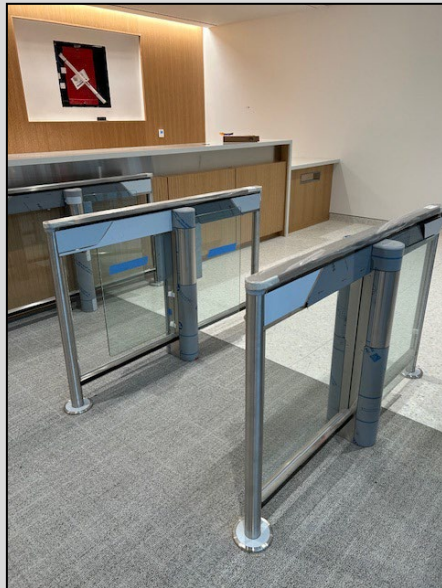
# PROJECT OVERVIEW | SCOPE OF WORK (CON'T)

## 4. FINISHES + FURNITURE

- Painting throughout.
- Clean historic wood surfaces (columns, panels & shelving).
- New carpet
- All new and some repurposed furniture throughout.

## 5. OTHER SCOPE

- New entry doors and turnstiles
- New Circulation Desk
- Signage (Room & Donor)



*Main Reading Room*

# PROJECT SCHEDULE OVERVIEW

# PROJECT SCHEDULE OVERVIEW



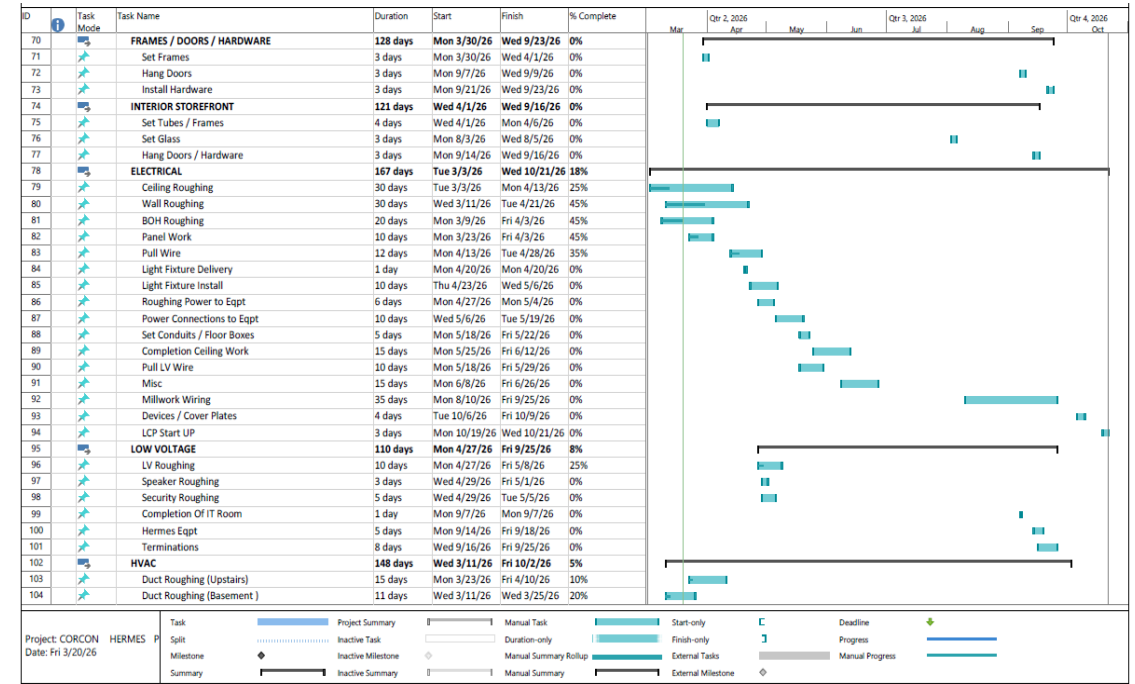
# PROJECT SCHEDULE OVERVIEW | DETAIL

## CONSTRUCTION SCHEDULE

- A detailed construction schedule is provided by the General Contractor and based on contract targets.
- The schedule factors in the academic calendar and black-out dates related to important events.
- The schedule is subject to periodic updates based on field conditions, equipment lead times and other unforeseen delays.
- The schedule is monitored weekly by the project team.

## WORKING HOURS:

- Construction work hours typically are 7AM-5PM
- The GC will perform some work AFTER HOURS as needed.
- Construction activity that is excessively disruptive will occur after hours in coordination with building occupants, Facilities Operations and Public Safety.
- Per Code, the NYC DOB must be notified of work occurring after hours including weekends.



# CONSTRUCTION IMPACTS + MITIGATION EFFORTS

# CONSTRUCTION IMPACTS | TYPICAL

## WHAT ARE THE TYPICAL DISRUPTIONS?

- NOISE, VIBRATION, DELIVERIES & TEMPORARY UTILITY SHUTDOWNS
- NOTE: Temporary interruptions of utilities servicing Kent Hall will occur after hours, and notice will be provided at least 48 hours in advance of the work.

## WHEN WILL THE TYPICAL DISRUPTIONS OCCUR?

- LEVEL OF DISRUPTION WILL VARY BY CONSTRUCTION PHASE, BUT MOST DISRUPTION WILL OCCUR EARLY IN THE PROJECT.
- NOTE: Excessively disruptive work will occur after hours and will be coordinated with class times. Material deliveries typically will occur early in the morning.

## WHERE WILL TYPICAL CONSTRUCTION ACTIVITIES & DISRUPTIONS OCCUR?

- Most construction activity will take place in the primary construction zone on the 300 level + mezzanine.
- Material deliveries and waste removal will take place via the 200 level.
- Targeted project work will occur on the 200 and 400 levels and will be coordinated with occupants.
- Areas outside of the immediate construction jobsite will be cleaned daily.



# CONSTRUCTION IMPACTS | DETAIL

## WHAT ARE SOME OF THE LIMITED, PHASE-SPECIFIC DISRUPTIONS?

- GENERAL DEMOLITION + SHAFT REMOVAL
- SLAB CORING
- ROUTING DATA & ELECTRICAL INFRASTRUCTURE
- HISTORIC CEILING FOR VAULT REPAIR AND CEILING INSTALL

## WHEN WILL THESE LIMITED DISRUPTIONS OCCUR?

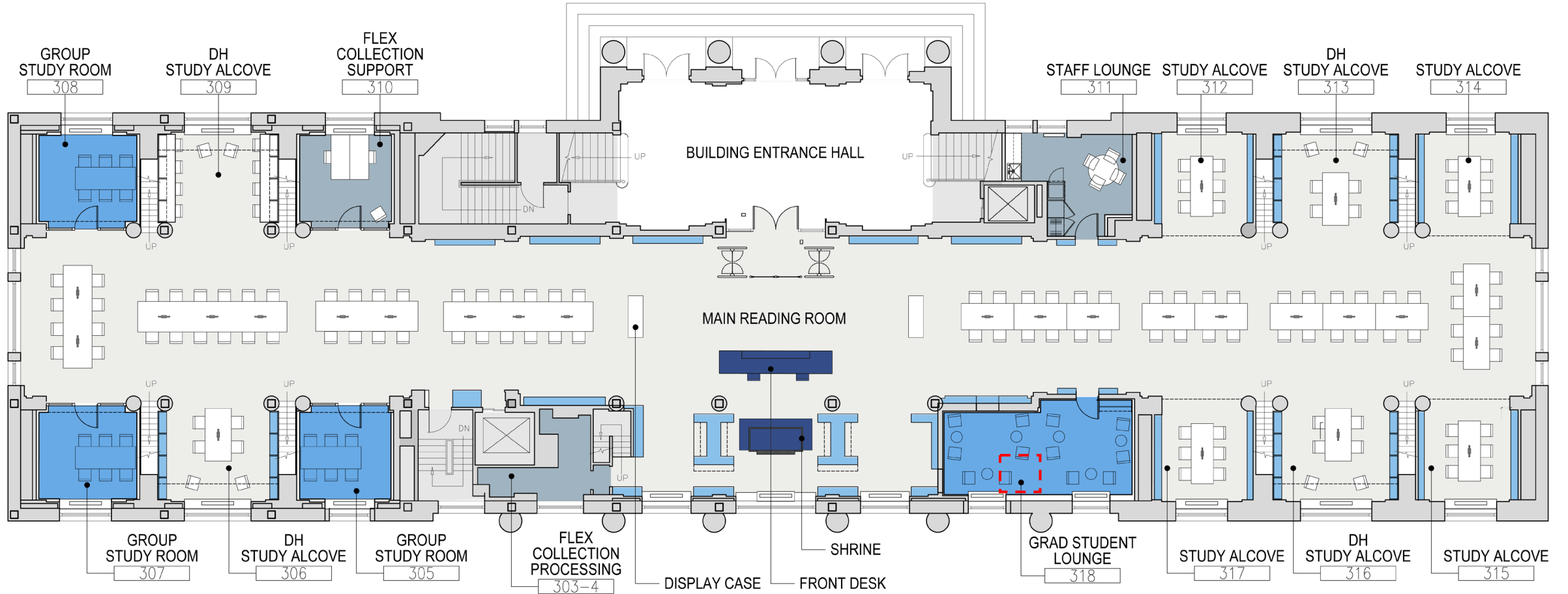
- SUMMER 2026

## WHERE WILL THESE ACTIVITIES & DISRUPTIONS OCCUR?

- 200-LEVEL CEILING: SLAB CORING FOR ELECTRICAL
- 300-LEVEL: SLAB TRENCHING FOR ELECTRICAL; ABANDONED INTERNAL DUMBWAITER SHAFT REMOVAL; CEILING INSTALL
- 400-LEVEL: SHAFT REMOVAL CONTINUATION



# PROPOSED FLOOR PLAN



# PROJECT COMMUNICATIONS

# PROJECT COMMUNICATIONS

During construction, the project team will provide regular project updates to preview the work that will be occurring.

Project updates also will be posted on the project web page at:

[cufo.columbia.edu/starrlibrary](https://cufo.columbia.edu/starrlibrary)

Follow-up meetings with building occupant groups will be scheduled as needed.

The screenshot shows a project page for the C.V. Starr East Asian Library Renovation. The page features a navigation bar with 'DESIGN AND CONSTRUCTION' and 'CUIMC Capital Projects' tabs. The main title is 'C.V. Starr East Asian Library Renovation'. Below the title is a large image of the library interior. To the right of the image are buttons for 'View Active & Past Projects' and 'Initiate a Project'. Below the image is a 'What is Happening' section with a paragraph of text and social media icons for Facebook, Twitter, LinkedIn, and YouTube. A 'Back to Top' button is located at the bottom right of the page.

DESIGN AND CONSTRUCTION

CUIMC Capital Projects Facilities and Operations

About Us ▾ What We Do ▾ Working with Us Projects Design Requirements Sustainability

## C.V. Starr East Asian Library Renovation

[View Active & Past Projects](#)

[Initiate a Project](#)

Contact  
[projx@columbia.edu](mailto:projx@columbia.edu)

Type  
[Academic Space](#)  
[Historic Restoration](#)

Campus  
[Morningside](#)

Status  
[Active](#)

[Back to Top](#)

What is Happening

Beginning in early April, Facilities and Operations will commence a renovation of the C.V. Starr East Asian Library on the 300 level of Kent Hall to restore the historic decorative plaster ceiling. The project also will include other improvements such as new group study rooms, new accessible lobby entrance doors, a new circulation desk, new and refurbished dimmable lighting, carpet replacement in the reading

# Q & A